

38211

LEVEL TECH

BY



2000-2006 GM SUV 1500 2WD /4WD

TAHOE / SUBURBAN / AVALANCHE / YUKON / ESCALADE / DENALI

2.5" Front 1.5" Rear Leveling Kit

BASIC KIT INCLUDES:

- 2) Torsion Keys
- 2) Shock Extenders
- 2) 9/16 X 3 Bolts
- 2) 9/16 Nylock Nuts
- 4) 9/16 Washers
- 2) 1.5" Tall Rear Billet Coil Spacers



Tools required for Installation

- 1. Safety glasses
- 2. Load rated floor jack
- 3. Metric / American socket set
- 4. Metric / American wrench set
- 5. GM torsion bar tool
- 6. ½ impact gun
- 7. Tape measure

Disassembly

1) Prior to lifting the vehicle it is recommended that you measure the stock height so that you have a base line measurement. Measure from the bottom of the wheel to the lip of the fender, Position truck on a flat surface and lift vehicle by the frame so that the front wheels are off the ground. Use a floor jack and jack stands or a (2) two post lift if available.

NEVER WORK UNDER AN UNSUPPORTED VEHICLE

2) Locate the torsion key cross member under the cab of the truck. Using a GM Torsion Bar Unloading Tool compress the driver's side key so that you can remove the threaded part of the torsion adjuster. Remove the torsion key adjusting bolt and adjuster completely. Releasing the tension on the unloading tool will now release the tension on the torsion bar. Slide torsion bar forward allowing the torsion key to be removed.

Front Assembly

3) Install the FULL THROTTLE SUSPENSION Billet Steel torsion key and slide torsion bar back into position. Apply pressure with torsion bar unloading tool to the torsion key, and create enough space to reinsert the torsion key keeper that the adjusting bolt threads into. IMPORTANT! Make sure the Torsion Bar is extended at least ¼" through the Torsion Key.

4) Reinstall the factory adjusting bolt, and adjust it so ¼" of bolt threads extend beyond torsion key keeper. IMPORTANT! – Each ¼" of adjustment on the bolt equals 1" at the wheel. It is best to check ride height after this initial setting and adjust as needed. Note: Over Cranking of the suspension will affect ride quality and is not recommended.

5) Unbolt the lower shock. Save the hardware.

6) Install the FTS Shock extension onto the shock using the 9/16 Bolt & hardware provided. Tighten to 100 lb-ft.

7) Compress and rotate the shock so the head of the bolt provided is facing towards the frame. Install the shock extension to the lower control arm using the factory hardware. Tighten to 100 lb.-ft.

8) Repeat steps 1 through 4 on the Opposite Side of the vehicle. Follow each step closely making sure to double-check the torque on all fasteners. Measure the distance between the tires and fenders to make sure both sides of the truck are even.

9) Wheel Alignment; a Certified Alignment Technician that is experienced with lifted vehicles is recommended to perform the alignment. *Minor trimming of the front air dam may be required to ensure adequate tire clearance.*It is also recommended that you adjust your headlights whenever your vehicle's ride height is altered.

Rear Installation:

1) Jack up the rear of the vehicle and support the frame rails with jack stands.

2) Remove the rear wheels and tires.

3) Disconnect brake lines at top of differential and unbolt the driver and passenger brake lines from the axle housing.

4) With the rear axle Supported disconnect sway bar end links.

Skip Step 5 If You Vehicle Is Not Auto ride Auto Ride Models Only

5) Disconnect the air ride sensor bracket from the upper rear trailing arm.

6) Unclip ABS lines at upper trailing arm then up at the frame to allow enough slack for when you lower the axle down.

7) With the rear axle supported by the jack, Remove the lower shock mounting hardware.

8) Slowly lower axle and remove coil springs and rubber isolators.

9) Install the FTS billet spacer on the axle, Install OEM rubber isolator on top of billet spacer.

10) Reinstall rear coil spring in the same orientation it was removed.

11) Jack axle up and reconnect lower shock mounting hardware and sway bar end links.

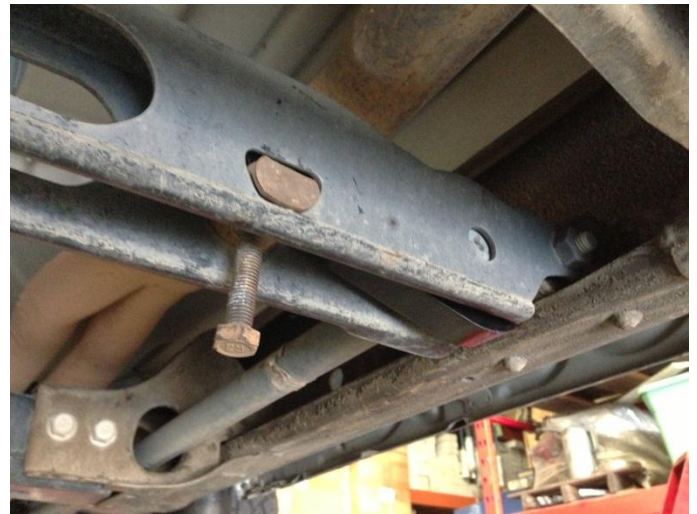
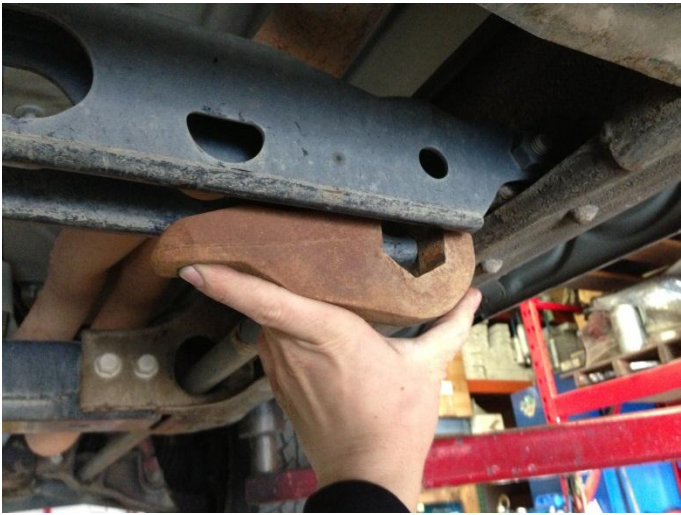
12) Reattach ABS lines, brake line and emergency brake cables back in there original locations.

13) Reinstall wheels/tires and torque to spec.

14) Recheck all hardware, cables and brake line, Rear installation is now complete.

THANK YOU FOR USING FULL THROTTLE SUSPENSION LEVELING KITS







Product Warranty and Warnings-

FTS provides a Limited Lifetime Warranty to the original retail purchaser who owns the vehicle, on which the product was originally installed, for defects in workmanship and materials.

The Limited Lifetime Warranty excludes the following FTS items; bushings, bump stops, ball joints, tie rod ends, limiting straps, cross shafts, heim joints. These parts are subject to wear and are not considered defective when worn. They are warranted for 60 days from the date of purchase for defects in workmanship.

Take apart shocks are considered a serviceable shock with a one year warranty on leakage only. Service seal kits are available separately for future maintenance. All other shocks are covered under our Limited Warranty.

FTS does not warrant any product for finish, alterations, modifications and/or installation contrary to FTS instructions. Alterations to the finish of the parts including but not limited to painting, powder coating, plating and/or welding will void all warranties. Some finish damage may occur to parts during shipping which is considered normal and is not covered under warranty.

FTS products are not designed nor intended to be installed on vehicles used in race applications or for racing purposes or for similar activities. (A "RACE" is defined as any contest between two or more vehicles, or any contest of one or more vehicle against the clock, whether or not such contest is for a prize). This warranty does not include coverage for police or taxi vehicles, race vehicles, or vehicles used for government or commercial purposes. Also excluded from this warranty are sales outside of the United States of America.

Installation of most suspension products will raise the center of gravity of the vehicle and will cause the vehicle to handle differently than stock. It may increase the vehicle's susceptibility to a rollover, on road and off road, at all speeds. Extreme care should be taken to operate the vehicle safely at all times to prevent rollover or loss of control resulting in serious injury or death.

FTS makes every effort to ensure suspension product compatibility with all vehicles listed in the catalog, but due to unknown auto manufacturer's production changes and/or inconsistencies by the auto manufacturer,

FTS cannot be responsible for 100% compatibility, including the fitment of tire and wheel sizes listed. The Tire and Wheel sizes listed in FTS's catalog are only a guideline for street driving with noted fender trimming. FTS is not responsible for damages to the vehicle's body or tires.

FTS's obligation under this warranty is limited to the repair or replacement, at FTS option, of the defective product only. All costs of removal, installation or re-installation, freight charges, incidental or consequential damages are expressly excluded from this warranty. FTS is not responsible for damages and/or warranty of other vehicle parts related or non-related to the installed FTS product. This warranty is expressly in lieu of all other warranties expressed or implied. This warranty shall not apply to any product that has been subject to accident, negligence, alteration, abuse or misuse as determined by FTS.

FTS suspension components must be installed as a complete system including shocks as shown on our current website. All warranties will become void if FTS parts are combined and/or substituted with other aftermarket suspension products. Combination and/or substitution of other aftermarket suspension parts may cause premature wear and/or product failure resulting in an accident causing injury or death. FTS does not warrant products not manufactured by FTS.

Installation of FTS product may void the vehicles factory warranty; it is the consumer's responsibility to check with their local vehicle's dealer for warranty disposition before the installation of the product.

It is the responsibility of the distributor and/or the retailer to review all warranties and warnings of FTS products with the consumer prior to purchase. FTS reserves the right to supersede, discontinue, change the design, finish, part number and, or application of parts when deemed necessary without written notice. FTS is not responsible for misprints or typographical errors within the catalog or price sheet.

Thank You for choosing Full Throttle Suspension
Tech support 559-271-8685 or send email to fts.dwgs@gmail.com